

ANTI-AGING/MOISTURIZING ACTIVE INGREDIENTS

Product Bulletin

KROMACTIVE SH

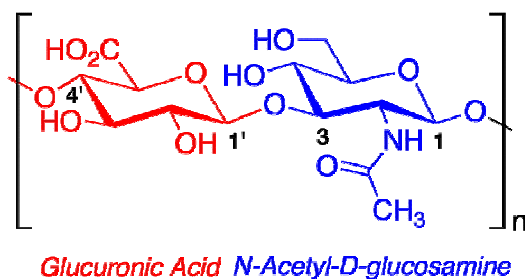
INCI Name: Sodium Hyaluronate

Description

Kromactive SH is a full range standardized sodium hyaluronate obtained by fermentation technology with *Streptococcus equi* subsp. *zooepidemicus* bacterial strain. The process it does not involve any GMO or animal materials. Different molecular weight are available from oligomers (exceptional as anti-ageing ingredient) to very high one (exceptional as moisturizing ingredients). It is called "nature's moisturizer" for its unique biological functions.

Product Identification

INCI Name:	Sodium Hyaluronate
Chemical name:	Hyaluronic Acid, Sodium Salt
CAS number:	9067-32-7
EINECS:	232-678-0
Formula:	(C ₁₄ H ₂₀ NO ₁₁ Na) n
Structure:	The hyaluronic acids (HA) are a class of macromolecular proteoglycans characterized by a highly polymerized chain of glucuronic acid and N-acetylglucosamine units bonded to protein.



Molecular weight

SLMW	8000-50000 Da
LMW	1.0 -1.5 Million Da
MMW	1.5 -2.0 Million Da
HMW	2.0-2.5 Million Da

Typical properties (not intended as product specification)

Appearance	White powder
Transparency	Light transmittance 99.0% Min
Glucuronic acid	44%
pH value	6.0-7.5
Loss on drying	10.0%
Protein	< 0.1%
Heavy metals(Pb)	20ppm
As	2ppm
Bacteria counts	< 10/g
Mold & Yeast	< 10/g
E. Coli	Negative
Salmonella	Negative
Staphylococcus aureus	Negative
Pseudomonas aeruginosa	Negative
Pathogenic Germ	Negative

Properties

The remarkable ability of hyaluronic acid is to hold moisture results in soft, smooth, hydrated and elastic skin with a desired sensory effect. Water retention is an important biological function of hyaluronic acid which plays an important role in cosmetics.

Applications

- For skin care, HA can be widely used in cream, lotion and essence to maintain skin smooth and elastic
- For hair care, HA endues shampoo and hair cream with excellent moisturizing action which leaves hair feeling soft and manageable
- For make-up, it is safe and stable to use in formulations including powders, lipstick and foundation cream

Formula Guidelines

Typically used at a level of:

- Skin care: 0.05 – 0.5%
- Hair care: 0.1 – 0.5%
- Make up: 0.05 – 0.1%

Storage & Handlings

Storage: the product may be stored for 24 months from the date of manufacture in the unopened original container. Keep container tightly closed under cool(2°C – 10°C) and light proof conditions. Once opened, use contents quickly.