

ANTI-AGING/MOISTURIZING ACTIVE INGREDIENTS Product Bulletin

KROMACTIVE β -GLUCAN

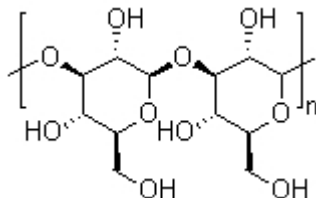
INCI Name: Water (and) Beta-glucan

Description

Kromactive β -Glucan is a soluble fiber derived from the oat's (*Avena sativa*) endosperm cell walls. It is a natural polymer comprised of individual glucose molecules that are linked together by a series of Beta-(1,3) and Beta-(1,4) linkages. It is processed using technology which refines Oat- β -Glucan to produce a highly active soluble fraction. Oat- β -glucan has been clinically shown to penetrate the skin and help reduce the visible signs of aging.

Product Identification

Chemical Name: Oat Beta-(1,3)(1,4)-D-Glucan
INCI Name: Water (and) Beta-glucan
CAS number: 7732-18-5 (and) 9012-72-0/ 9041-22-9/ 160872-27-5
EINECS: 231-791-2 (and) 232-739-1
Structure:



Typical properties (not intended as product specification)

Appearance	colorless to yellowish, clear to hazy liquid
Odor	characteristic
Density (D20/4)	0.995-1.015
Refractive index (N20/D)	1.3300-1.3400
pH Value	4.0-6.0
Solubility	soluble in water
Total Plate Count	100 cfu/g Max
Mold & Yeast	10 cfu/g Max
Staphylococcus aureus	Negative
Pseudomonas aeruginosa	Negative

Properties

Skin care

- An effective anti-ageing ingredient
- Excellent soothing and moisturizing characteristics
- Immuno-stimulant properties
- Rejuvenates the skin
- Stimulates fibroblast growth and collagen synthesis
- Suitable for sensitive skins
- A cost effective hyaluronic acid replacement

Hair care

- Increases strength
- Increases extensibility

Applications

Kromactive -Glucan is useful in anti-aging products and wrinkle treatment products such as gels, serums, lotions and creams.

Formula Guidelines

Typically used at a level of: 1.0-50.0%

Storage & Handlings

Storage: the product may be stored for 12 months from the date of manufacture in the unopened original container. Keep container tightly closed under cool(10°C-25°C) and light proof conditions. Once opened, use contents quickly.